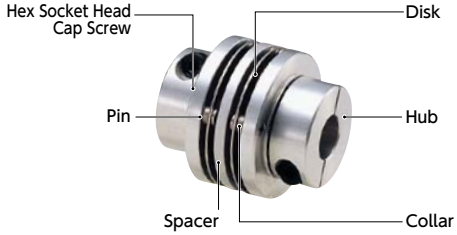


**Structure**

● Clamping type

**MHW-C**



● Applicable motors

	MHW
Servomotor	-
Stepping motor	⊙
General-purpose motor	⊙

⊙: Excellent ○: Very good

● Property

	MHW
Zero Backlash	⊙
Allowable Misalignment	○

⊙: Excellent ○: Very good

- This is a disk type flexible coupling.
- The stainless steel disk allows the eccentricity, and angular misalignment, and end-play.

● Application

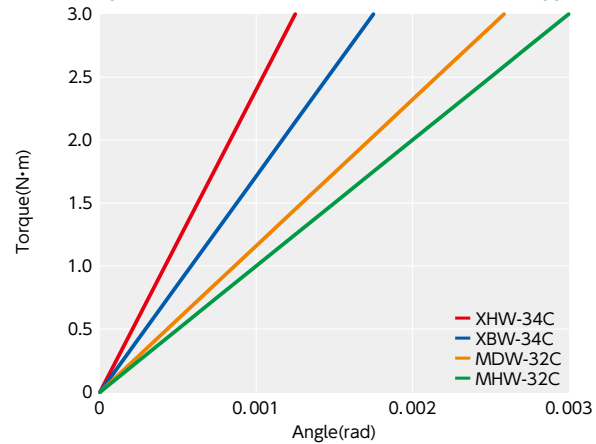
XY stage/Transport device

● Material/Finish

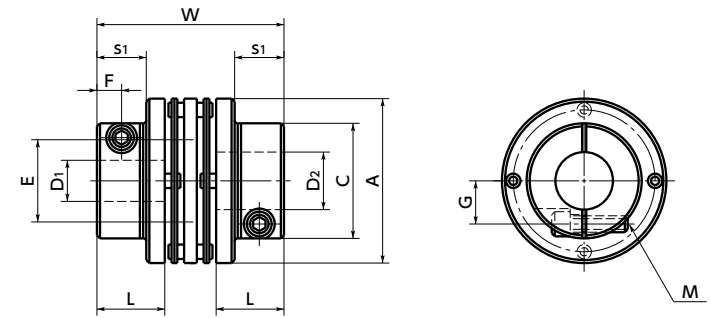


	MHW-C
Hub	A2017 Alumite Treatment
Spacer	A2017 Alumite Treatment
Disk	SUS301
Pin	SUS303
Collar	SUS303
Hex Socket Head Cap Screw	SCM435 Ferrosferic oxide film

● Comparison of static torsional stiffness (disk-type)



**MHW-C**



**Dimensions**

Unit : mm

Part Number	A	L	W	C	s1	E	F	G	M	Screw Tightening Torque (N·m)
<b>MHW-32C</b>	32	13.7	40	22	9	15	4	8	M3	1.5
<b>MHW-40C</b>	40	16.5	46	28	12	20	6	10.5	M4	2.5
<b>MHW-50C</b>	50	19.4	52	39	15	25	7	14.75	M5	7
<b>MHW-63C</b>	63	22.3	58	45	18	32	8	17	M6	12

Part Number	Standard Bore Diameter D1 · D2											
	6	8	10	11	12	14	15	16	18	19	20	25
<b>MHW-32C</b>	●	●	●									
<b>MHW-40C</b>		●	●	●	●	●						
<b>MHW-50C</b>					●	●	●	●	●	●	●	
<b>MHW-63C</b>							●	●	●	●	●	●

- All products are provided with hex socket head cap screw.
- Recommended dimensional allowances of applicable shaft diameter are h6 and h7.
- In case of mounting on D-cut shaft, be careful about the position of the D-cut surface of the shaft. → P.258

**Performance**

Part Number	Max. Bore Diameter (mm)	Rated*1 torque (N·m)	Max. Rotational Frequency (min <sup>-1</sup> )	Moment*2 of Inertia (kg·m <sup>2</sup> )	Static Torsional Stiffness (N·m/rad)	Max. Lateral Misalignment (mm)	Max. Angular Misalignment (°)	Max. Axial Misalignment (mm)	Mass*2 (g)
<b>MHW-32C</b>	10	2	19000	6.2×10 <sup>-6</sup>	1000	0.15	2	±0.4	48
<b>MHW-40C</b>	14	4	15000	1.6×10 <sup>-5</sup>	1500	0.2	2	±0.5	81
<b>MHW-50C</b>	20	7.5	12000	4.6×10 <sup>-5</sup>	2000	0.2	2	±0.6	150
<b>MHW-63C</b>	25	10	10000	1.1×10 <sup>-4</sup>	2500	0.3	2	±0.8	230

\*1 : Correction of rated torque due to load fluctuation is not required.

\*2 : These are values with max. bore diameter.

● Related Products

The Double-Disk type Flexible Coupling **XHW** is compatible with the servomotor with 350% instantaneous max. torque is available.  
→ P.65



● Part number specification

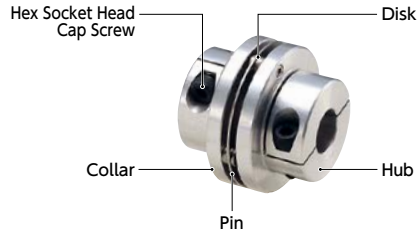
**MHW-32C-8-10**



## Structure

### ● Clamping type

#### MHS-C



### ● Applicable motors

	MHS
Servomotor	-
Stepping motor	○
General-purpose motor	○

○: Excellent ○: Very good

### ● Property

	MHS
Zero Backlash	○
Allowable Misalignment	○

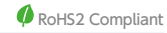
○: Excellent ○: Very good

- This is a disk type flexible coupling.
- The stainless steel disk allows the eccentricity, and angular misalignment and end-play.

### ● Application

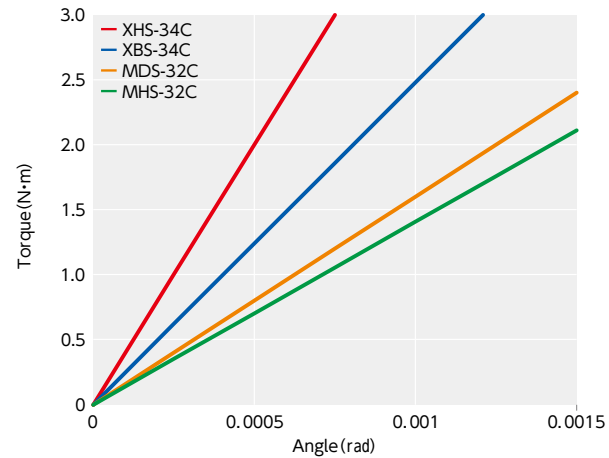
XY stage/Transport device

### ● Material/Finish

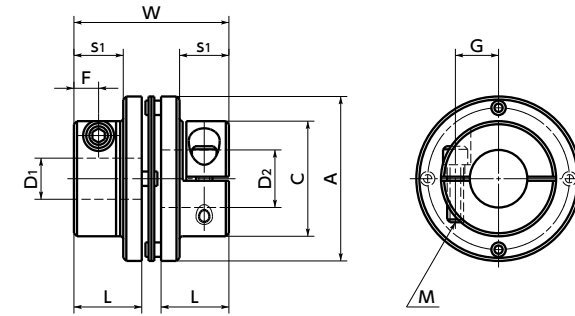


	MHS-C
Hub	A2017 Alumite Treatment
Disk	SUS301
Pin	SUS303
Collar	SUS303
Hex Socket Head Cap Screw	SCM435 Ferrosoferric oxide film

### ● Comparison of static torsional stiffness (single disk-type)



## MHS-C



## Dimensions

Unit: mm

Part Number	A	L	W	C	s <sub>1</sub>	F	G	M	Screw Tightening Torque (N·m)
<b>MHS-32C</b>	32	13.7	32	22	9	4	8	M3	1.5
<b>MHS-40C</b>	40	16.5	38	28	12	6	10.5	M4	2.5
<b>MHS-50C</b>	50	19.4	44	39	15	7	14.75	M5	7
<b>MHS-63C</b>	63	22.3	50	45	18	8	17	M6	12

Part Number	Standard Bore Diameter												
	D <sub>1</sub> · D <sub>2</sub>	6	8	10	11	12	14	15	16	18	19	20	25
<b>MHS-32C</b>	●	●	●										
<b>MHS-40C</b>		●	●	●		●	●						
<b>MHS-50C</b>						●	●	●	●	●	●	●	
<b>MHS-63C</b>								●	●	●	●	●	●

- All products are provided with hex socket head cap screw.
- Recommended dimensional allowances of applicable shaft diameter are h6 and h7.
- In case of mounting on D-cut shaft, be careful about the position of the D-cut surface of the shaft. → P.258

## Performance

Part Number	Max. Bore Diameter (mm)	Rated* <sup>1</sup> torque (N·m)	Max. Rotational Frequency (min <sup>-1</sup> )	Moment* <sup>2</sup> of Inertia (kg·m <sup>2</sup> )	Static Torsional Stiffness (N·m/rad)	Max. Lateral Misalignment (mm)	Max. Angular Misalignment (°)	Max. Axial Misalignment (mm)	Mass* <sup>2</sup> (g)
<b>MHS-32C</b>	10	2	19000	4.5×10 <sup>-6</sup>	1300	0.02	1	±0.2	38
<b>MHS-40C</b>	14	4	15000	1.2×10 <sup>-5</sup>	2800	0.02	1	±0.2	66
<b>MHS-50C</b>	20	7.5	12000	3.7×10 <sup>-5</sup>	3700	0.02	1	±0.2	120
<b>MHS-63C</b>	25	10	10000	8.4×10 <sup>-5</sup>	5000	0.02	1	±0.2	190

\*1: Correction of rated torque due to load fluctuation is not required.

\*2: These are values with max. bore diameter.

### ● Related Products

The Single-Disk type Flexible Coupling [XHS] is compatible with the servomotor with 350% instantaneous max. torque is available.

→ P.71



### ● Part number specification

**MHS-32C-8-10**

