

# DRAW-WIRE

Draw-wire support for encoders

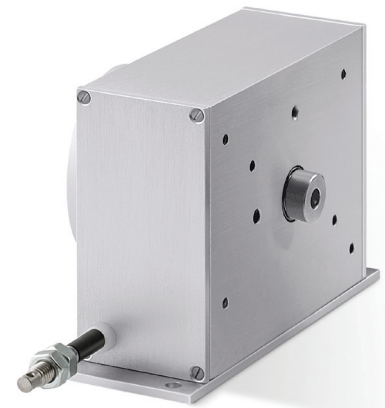
lika

Series

SF0M1 • SF0M2



- Compact and cost effective draw-wire unit for encoders
- Simple and reliable construction
- Fits incremental, absolute, analogue & fieldbus encoder
- Measurement range from 5000 to 6800 mm
- Drum circumference:
  - 200,0 mm for incremental encoder
  - 204,8 mm for absolute encoders



SF0M1 • SF0M2

## COMBINATIONS WITH ENCODERS

CK58-H4-00500-ZCU-15-ST-RL010

CK58-H4-02000-ZCU-15-ST-RL010

EMC58-12-12-GS2-15-PT-RM2

EMC58-12-14-PA2-15-PT-RM2

AMC58-12-12-PB2-15-PT-R + CC-PB

## ENVIRONMENTAL SPECIFICATIONS

Operating temperature range: -25°C +85°C (-13°F +158°F)

Protection: see encoder

## MECHANICAL SPECIFICATIONS

Dimensions: see drawing

Stroke per turn: 200 - 204,8 mm

Wire retraction force: 5 ÷ 15 N

Measuring length: 5000, 6800 mm

Measuring speed: 3 m/sec max.

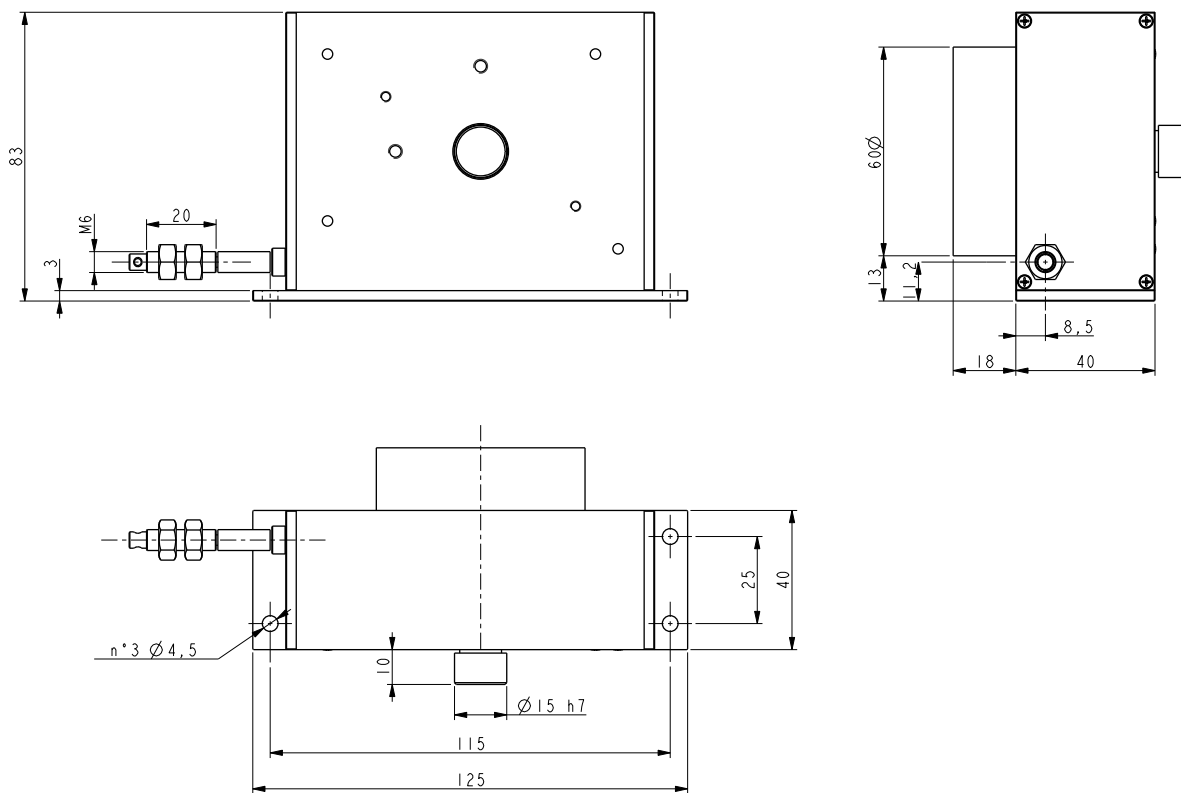
Repeat accuracy: ± 0.15 mm

Weight: ~ 0,6 kg (without encoder)

## MATERIALS

Housing: anodized, UNI EN AW-6082

Wire: stainless steel, non magnetic - UNI EN 4305



SF0M1  
SF0M2

Order code - incremental version

SF0M1	-	XXXXX Ⓐ
-------	---	------------

Order code - absolute version

SF0M2	-	XXXXX Ⓐ
-------	---	------------

Ⓐ MEASURING LENGTH

05000 = 5000 mm  
06800 = 6800 mm

Ⓐ MEASURING LENGTH

05000 = 5000 mm  
06800 = 6800 mm

Document release	Date	Description
1.0	September 2023	New order code