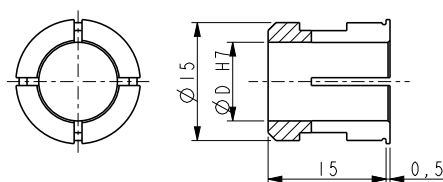
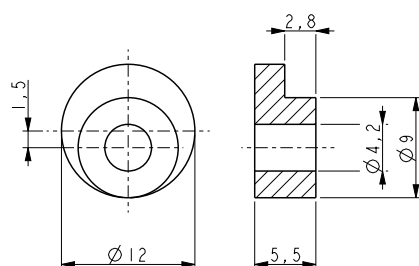


BR1 reducing sleeve

BR1-12	Ø 12 mm h7
BR1-11	Ø 11 mm h7
BR1-10	Ø 10 mm h7
BR1-9.52	Ø 9.52 mm h7
BR1-8	Ø 8 mm h7
BR1-6	Ø 6 mm h7



BR1 reducing sleeve

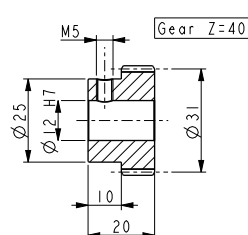
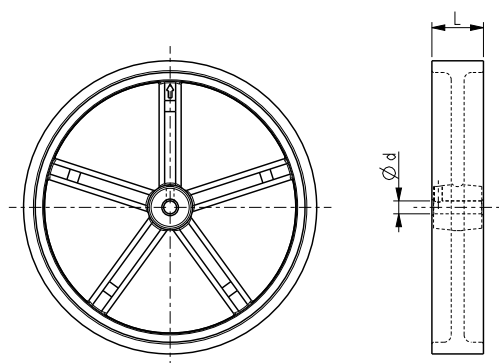


LKM-386 Fixing clamps

For all encoders with servo flange.
Kit LKM-386 is supplied as a set of 3 clamps, screws and nuts.

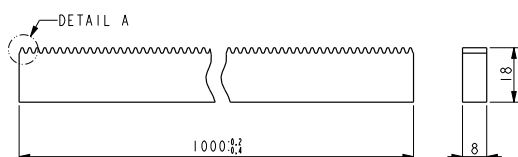
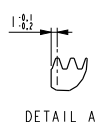
Mod.	Circ.	Surface	Ø d	L
RM200G	200 mm	rubber (smooth)	6 mm	12,5 mm
RM200Z	200 mm	metal (notched)	6 mm	12,5 mm
RM200GZ	200 mm	rubber (notched)	6 mm	12,5 mm
RM500G	500 mm	rubber (smooth)	8 mm	24,5 mm
RM500Z	500 mm	metal (notched)	8 mm	24,5 mm
RM500GZ	500 mm	rubber (notched)	8 mm	24,5 mm
RM500G-10	500 mm	rubber (smooth)	10 mm	24,5 mm
RM500GZ-10	500 mm	rubber (notched)	10 mm	24,5 mm

RM200, RM500 metric wheels



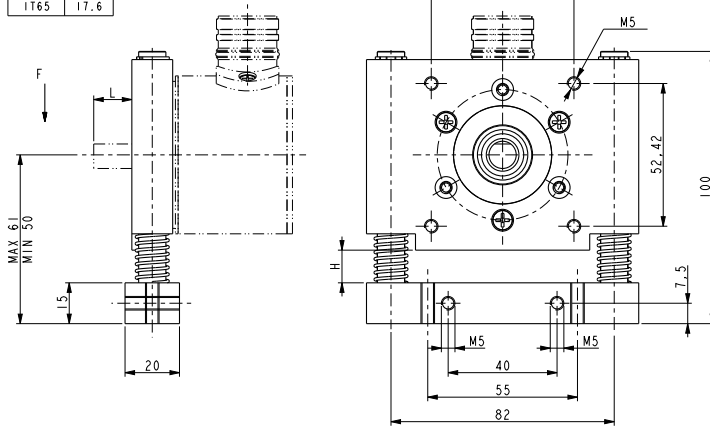
PF4260 (pinion) & LKM-1224 (rack)

For linear measurements.
1 turn of pinion equals 100 mm.
Suitable models: ICS, see PF0408.



M=0.79577
P=2.5
Z=399

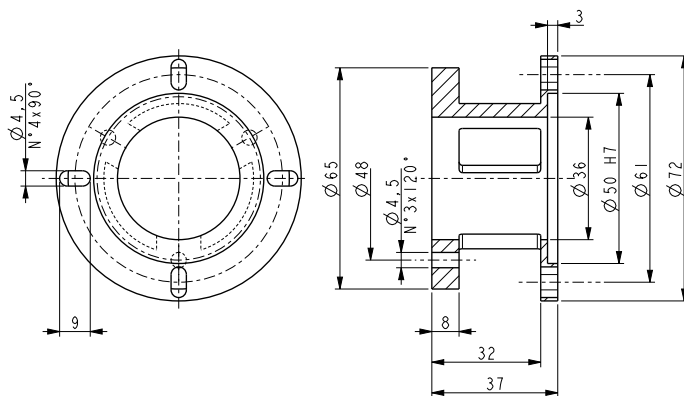
ITEM	L
xx58S	14
I65	20
IT65	17.6



PF0408 spring loaded fixing support

Can absorb misalignments when encoders are used with rack/pinions or metric wheels.

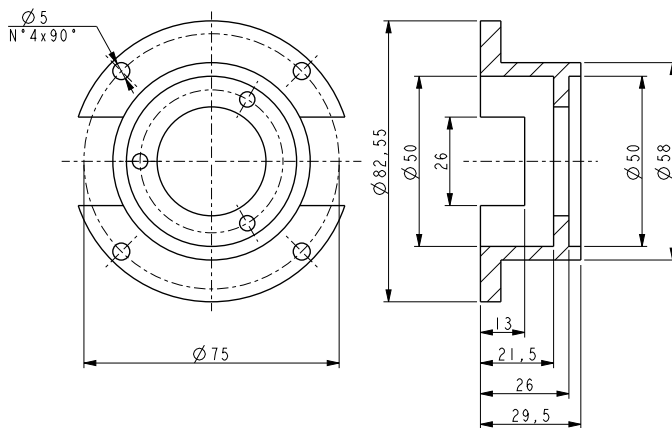
Suitable models: I58S, ES58S, EM58S, AS58S, AM58S, I65, IT65.



PF4256 mounting bell

Suitable for all encoders having clamp flange (I58S, ES/EM58S, AS/AM58S).

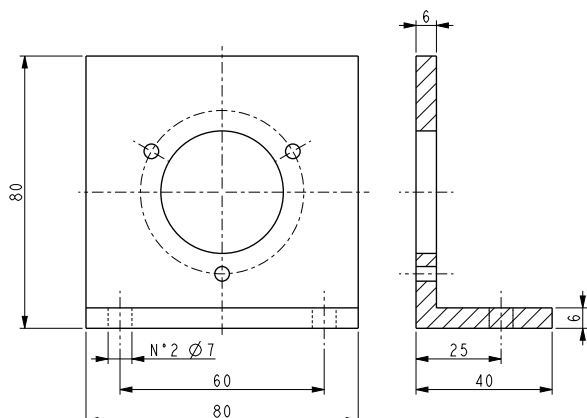
Fixing screws are supplied.



PF4264 mounting bell

Suitable for all encoders having servo flange (I58, ES/EM58, AS/AM58).

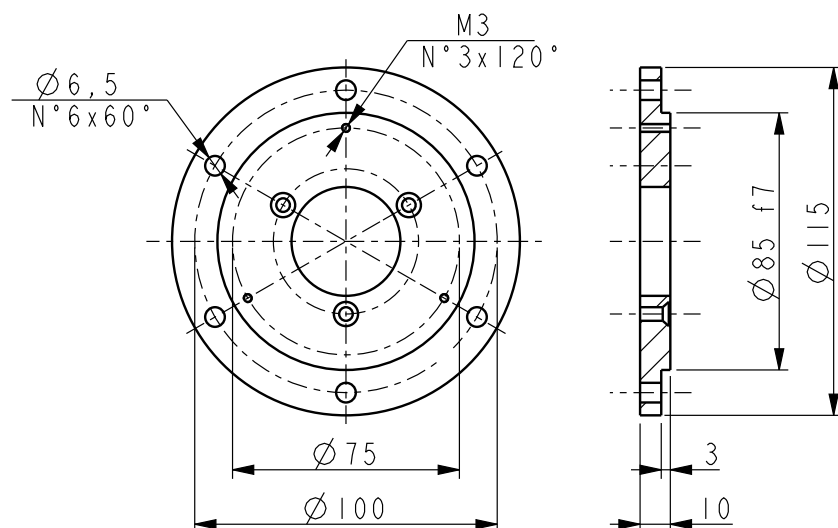
Fixing screws are supplied.



PF4257 mounting bracket

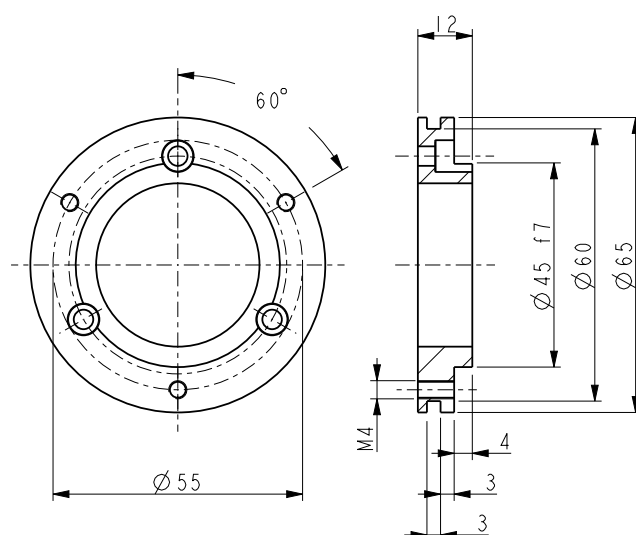
Suitable for all encoders having clamp flange (I58S, ES/EM58S, AS/AM58S).

Fixing screws are supplied.



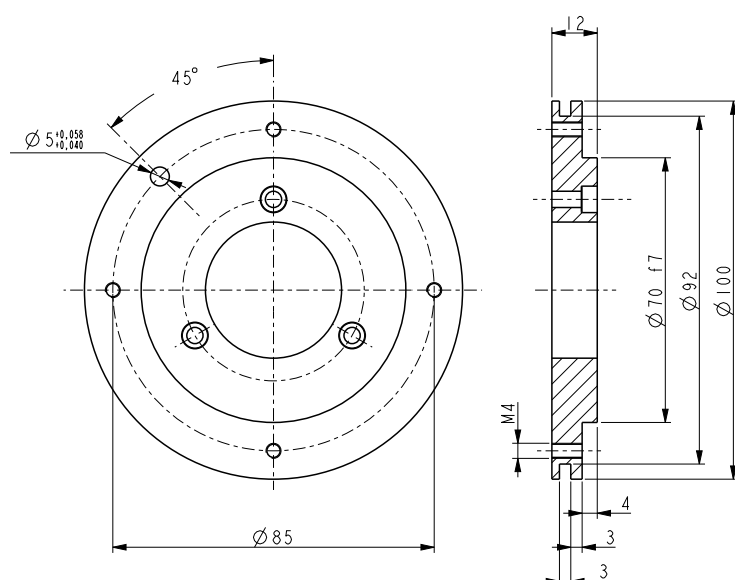
PF4258 adapter flange

Euroflange B10 adapter for:
I58S, I65, ES/EM58S, AS/AM58S encoders



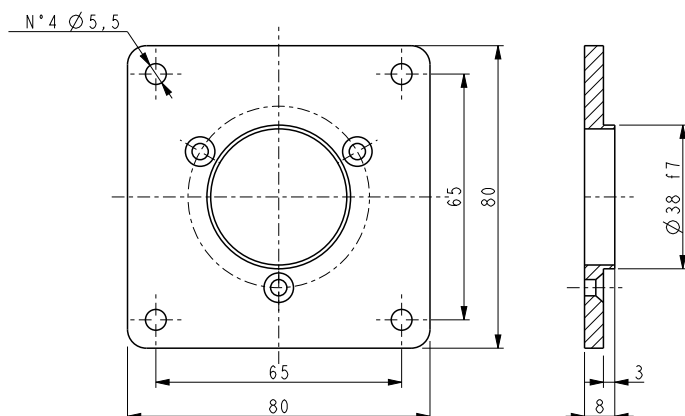
PF4263 adapter flange

Adapter flange to replace AS6 and AM6
encoders with AS58S and AM58S series.



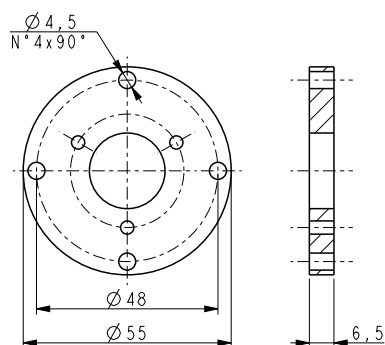
PF4262 adapter flange

Adapter flange to replace AS1 and AM1
encoders with AS58S and AM58S series.



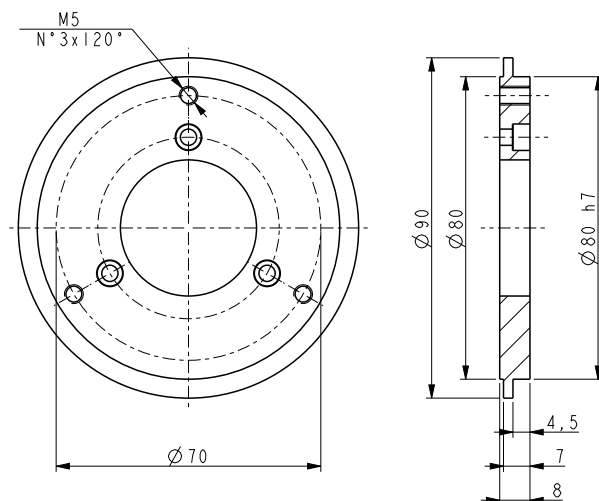
PF4259 square flange

Adapter for:
I58S, I65, ES/EM58S, AS/AM58S encoders.
Fixing screws are supplied.



PF4266 adapter flange

Adapter flange for:
I41 encoder for fixing on $\varnothing 48$ or $\square 34$ mm
Fixing screws are supplied.



PF4274 adapter flange

Adapter flange for:
I58S, ES/EM58S, AS/AM58S encoders to
 $\varnothing 90$ mounting.
Fixing screws are supplied.

CONNECTOR 1



Example of cordset, EC-M7F-LK-I5-3:
MIL connector 7 pin, standard connection, 5 wires cable, 3 m length

EC

CONNECTOR 1

CONNECTOR 2



Example of extension cable, EXC-M7F-LK-I5-3-M7M-LK:
MIL connector 7 pin, standard connection, 5 wires cable, 3 meters length, 7 pin MIL plug, standard connection

EXC

Order code

									Additional code for EXC		
EC EXC	-	XXXXX Ⓐ	-	XXX Ⓑ	-	XXX Ⓒ	-	XXXX Ⓓ	X	-	X

<p>Ⓐ CONNECTOR 1</p> <p>M7F = MIL connector 7 pin M7FP = MIL connector 7 pin + PG M10F = MIL connector 10 pin M10FP = MIL connector 10 pin + PG M19F = MIL connector 19 pin M32F = MIL connector 32 pin M41F = MIL connector 41 pin M7M = MIL 7 pin plug M10M = MIL 10 pin plug M19M = MIL 19 pin plug M32M = MIL 32 pin plug M41M = MIL 41 pin plug T7M = DIN 7 pin plug T12M = DIN 12 pin plug T8F = DIN 8 pin plug C12F = M23 12 pin connector cw CR12F = M23 12 pin connector ccw C12M = M23 12 pin plug cw CR17F = M23 17 pin connector ccw D9M = DSub 9 pin plug D15MV = DSub 15 pin plug, hi-density D15M = DSub 15 pin plug D25M = DSub 25 pin plug D9F = DSub 9 pin connector D15FV = DSub 15 pin connector, hi-density D15F = DSub 15 pin plug D25F = DSub 25 pin plug</p>	<p>Ⓑ ELECTRICAL CONNECTION 1</p> <p>LK = Standard Lika Sxx = Specific connections</p> <p>Ⓒ CABLE SPECIFICATIONS</p> <p>I5 = 5 wire cable (AB0) I8 = 8 wire cable (AB0 /AB0) A8 = 2 x 4 twisted wires cable (AS58, AM58, SSI series) A19 = 19 wires cable (AS58 Bit parallel series) A32 = 32 wires cable (AM58 Bit parallel series) A40 = 40 wires cable (HM58 P Bit parallel series) M8 = 8 wires hi-flex cable T12 = 12 wires hi-flex twisted cable</p>	<p>Ⓓ CABLE LENGTH</p> <p>L010 = 1 m L030 = 3 m L050 = 5 m L100 = 10 m L150 = 15 m ... = ... L200 = 20 m</p>			
			<p>CONNECTOR 2 see connector 1</p> <p>ELECTRICAL CONNECTIONS 2 see electrical connections 1</p>		

Note - connector: female connection
plug: male connection

Document release	Date	Description
1.0	3.10.25	Update to RM200, RM500 metric wheels and order code (cable length)